



# Conference and Events

---



Expect a hotel full of  
character, where everything  
is delivered with an informal,  
unstuffy attitude.

---







# A warm welcome to voco™ Manchester



## ALWAYS DEPENDABLE

Expect a very warm welcome to our highly acclaimed hotel in the heart of Manchester.

Whether it's a work trip, weekend get-together or a family celebration, at voco® Manchester you'll have everything you need and more.

Welcoming guests since 2020, our stylish hotel has over 200 square metres of contemporary event spaces to choose from - each with exceptional views across Manchester.

From intimate family affairs to larger celebrations of up to 150 guests, whatever you have planned, let us bring your event to life. We're on hand to host, making your event as smooth and enjoyable as possible.

Transform your next business event or get together, and benefit from our Day Delegate Rate or 24-Hour Conference Rate. With an array of flexible AV compatible meeting options, our team will work with you to create a bespoke package allowing you to focus on the bigger picture and leave the finer details to us.

Eat, drink and celebrate with friends or get some work done. Explore the city and all it has to offer on our doorstep. Take a wander. Take your time, it's all yours.

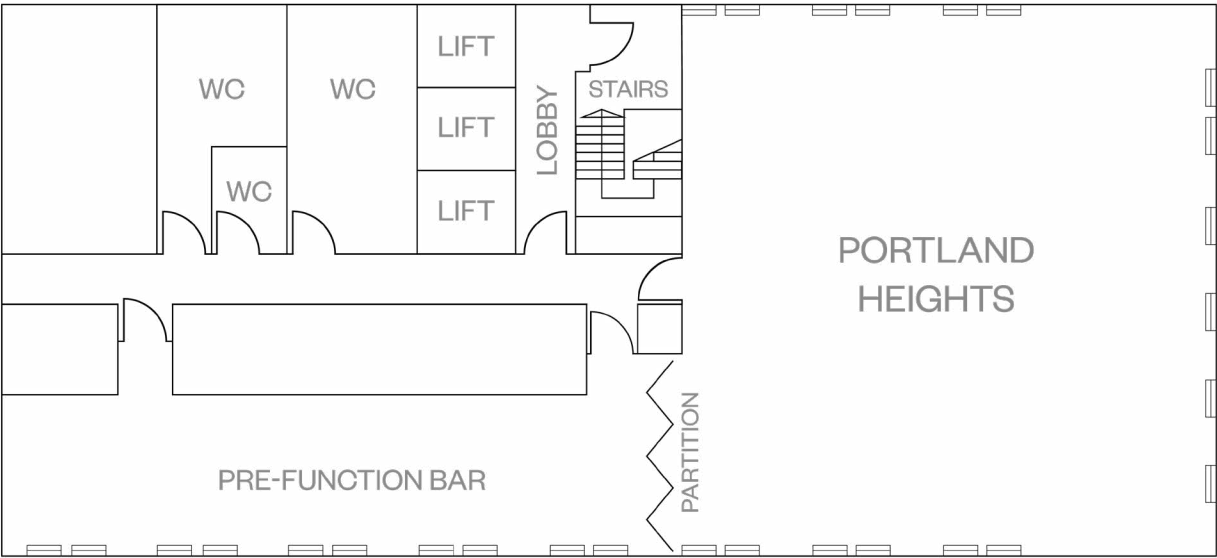


# Portland Heights

NINTH FLOOR

Portland Heights is the largest event space at voco® Manchester. Floor to ceiling windows give amazing views of the Manchester skyline. The Perfect spot to celebrate receptions, gala dinners and weddings.

This room can also be partitioned into three separate rooms, giving you flexibility for activities throughout the day. Just outside the room you will find a pre-function area, ideal for drinks receptions and refreshment breaks.





PORTLAND



# Portland, Oxford and Victoria Suites

NINTH FLOOR

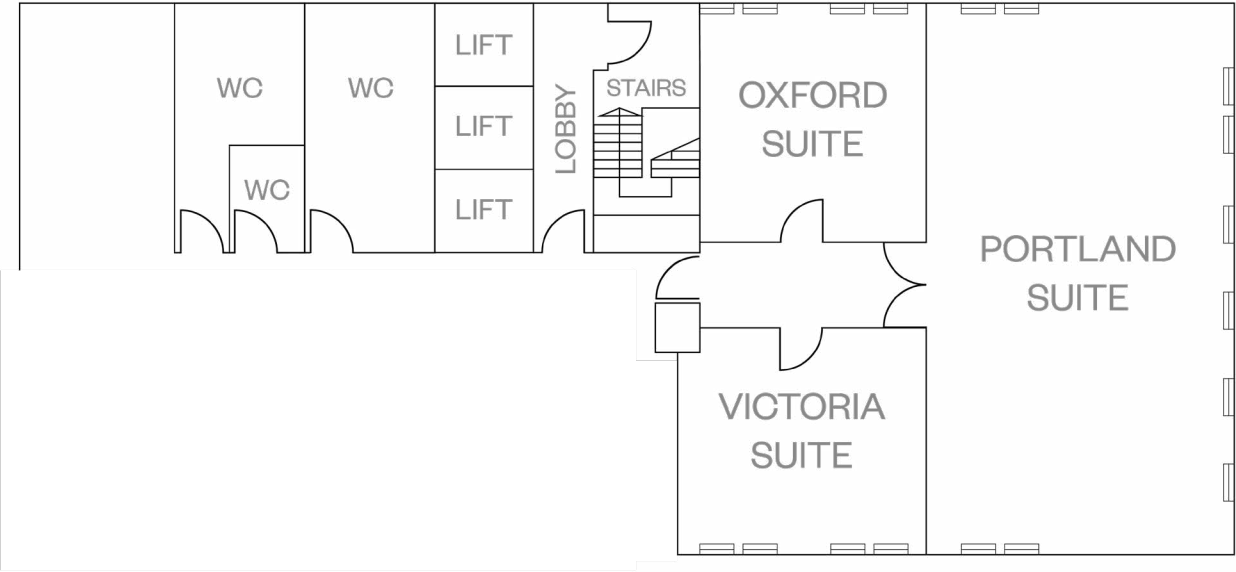
Enter our Portland, Oxford or Victoria Suites and impress your guests with wonderful views of the Manchester skyline.

The largest suite, Portland is suitable for larger meetings and events, the two smaller suites are ideal for more intimate gatherings or meetings for up to 20 delegates. All suites are flooded with natural light, courtesy of the floor to ceiling windows.

OXFORD



VICTORIA

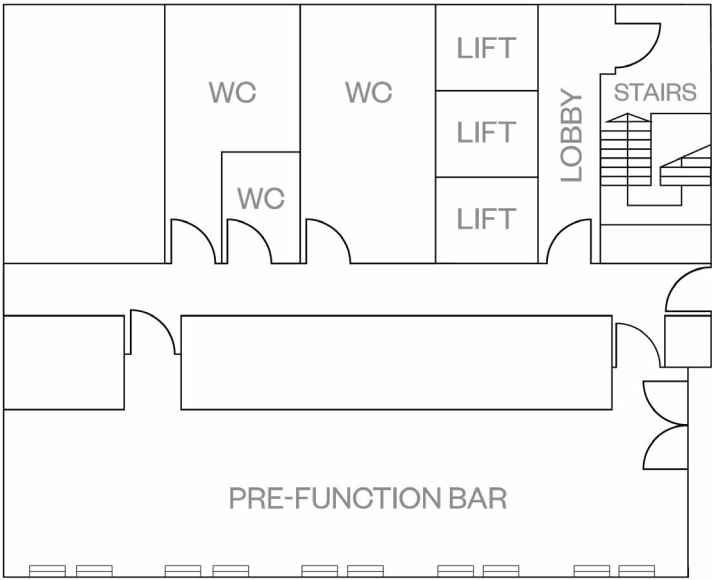




# Salvation Bar

## NINTH FLOOR

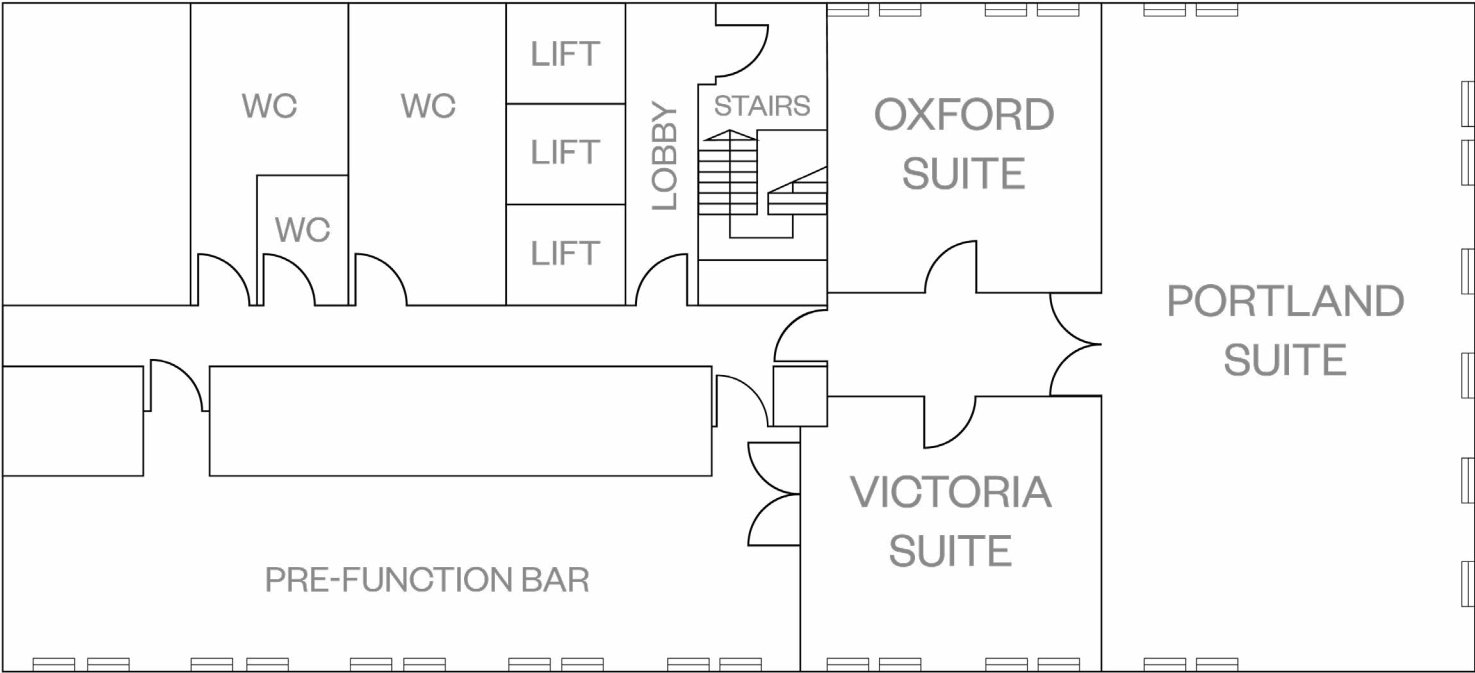
Perched on the ninth floor, Salvation Bar offers views across Manchester. Floor-to-ceiling windows frame the city's iconic skyline, blending historic architecture with modern skyscrapers. This versatile space is perfect for functions, corporate events, and private gatherings, providing a sophisticated ambiance enhanced by the stunning urban backdrop for up to 80 guests.





# Capacities and dimensions

Room Name	Dimensions L x W x H (m)	Theatre	Classroom	Boardroom	U-Shape	Cabaret	Dining	Drinks reception
Portland Heights	14.5 x 14.9 x 3.6	150	45	30	30	100	150	150
Portland	7.9 x 14.9 x 3.6	80	24	30	30	54	60	80
Victoria	6.5 x 6.1 x 3.6	30	12	20	20	16	20	30
Oxford	6.5 x 6.1 x 3.6	30	12	20	20	16	20	30
Salvation Bar	18.6 x 4 x 3.6	30	-	35	-	-	35	60



# Delegate Packages

---

**WE HAVE A FANTASTIC DAY DELEGATE OFFERING  
FROM £39.00 PER DELEGATE WHICH INCLUDES:**

Main meeting room hire:

Large in room TV screens with connection cables

Complimentary Wi-Fi

Arrival tea, coffee, breakfast snack

Mid-morning tea, coffee and snacks

Range of lunch offerings to suit your event size

Afternoon tea, coffee and snacks

Conference stationery

AV equipment

Sweets

Flipchart and pens

Dedicated on hand staff

Delegate packages

**WE ALSO OFFER 24-HOUR RATES FROM £150.00 WHICH INCLUDE  
ACCOMMODATION, BREAKFAST AND DINNER ALONG WITH  
YOUR DAY DELEGATE PACKAGE.**







# Events and Private Dining

## BANQUETING

Business lunch, buffet or grand banquet; impress your guests with a meal to remember. Whether you're celebrating a corporate success or simply keeping your delegates sustained and energised, banqueting at voco® Manchester is every bit as impressive as our surroundings. Our chefs have created a selection of menus inspired by locally-sourced seasonal produce – or we can work with you to tailor-make a menu for your special occasion.



# Accessibilty

---

Access around our public areas is made by means of level access. Our furniture and soft furnishings were carefully chosen with all types of disability and impairments in mind.

Braille buttons in the lift

Wheelchair height tables

Accessible toilet on the same floor as meeting rooms with grab rails and emergency buttons

Our aim is to make all guests stays as enjoyable as possible as if you are spending a night at home. We have 9 adapted bedrooms to make life easier and the ambience more appealing. There are super wide lifts, special assistance for guests with hearing impairments and we even have a suite with an electric hoist. The ceiling track has been designed to hoist guests from the bed into a mobile shower chair which can then access all areas of the bathroom (toilet, basin and shower). Please note that there is not a ceiling track hoist in the bathroom.







# Sustainability

We are supported in our sustainability practices, and in our improvement journey by the world-leading sustainability accreditation partner, Green Tourism. Achieving a Green Tourism award means that our sustainability practices have been assessed and verified by a credible partner. It shows that we have an ongoing commitment:

- to sustainability standards and practices
- to work responsibly, ethically, and sustainably
- to contribute to our community
- to reduce our impact on the environment, and
- to be accessible and inclusive to all visitors and staff.

Green Tourism has assessed our business against 15 sustainability criteria grouped under the pillars of People, Places and Planet. These consider the social, economic, and environmental actions we undertake, providing a holistic assessment of our sustainability performance.



# Rooms and Suites

---

## A PLACE TO SLEEP

Here's what you get in any of our 189 elegant and unstuffy rooms, 9 of which are fully accessible; Premium linens and lush toiletries. Free Wi-Fi and a desk where you can work in comfort. A TV for when you're off duty. An aerated shower, oh, and a kettle for a morning cuppa.

## STANDARD

Charming and cosy our standard rooms are thoughtfully furnished to create a relaxing environment.

## DELUXE

Unwind in a spacious and modern deluxe room. Enjoy the ultimate balance of comfort and convenience for business and leisure travellers alike.

## SUITES AND JUNIOR SUITES

Add a spot of luxury to your stay with our suites. Take in stunning city views from your own private terrace or find complete relaxation in a plush king sized bed.







# IHG<sup>®</sup> BUSINESS REWARDS

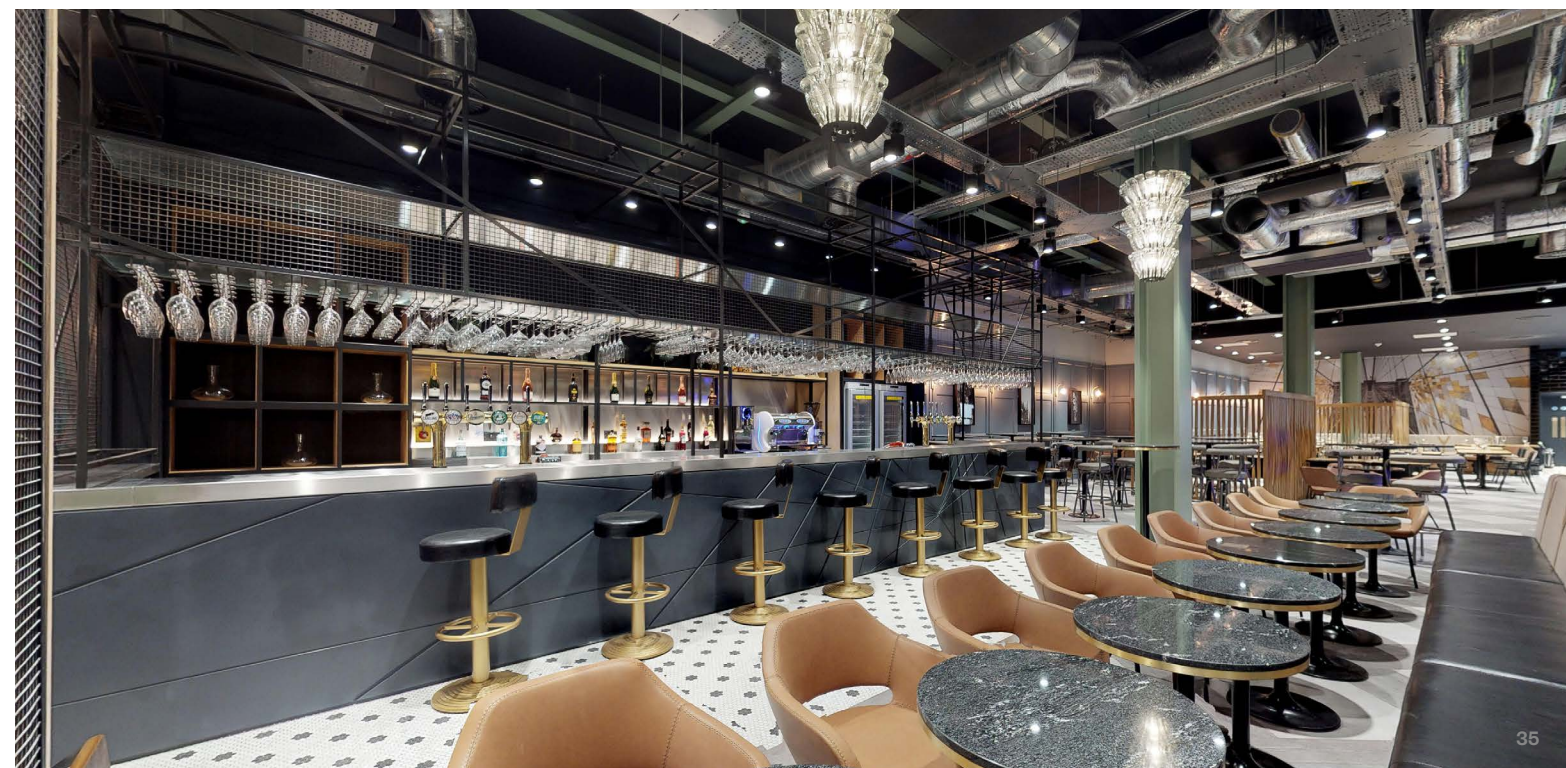
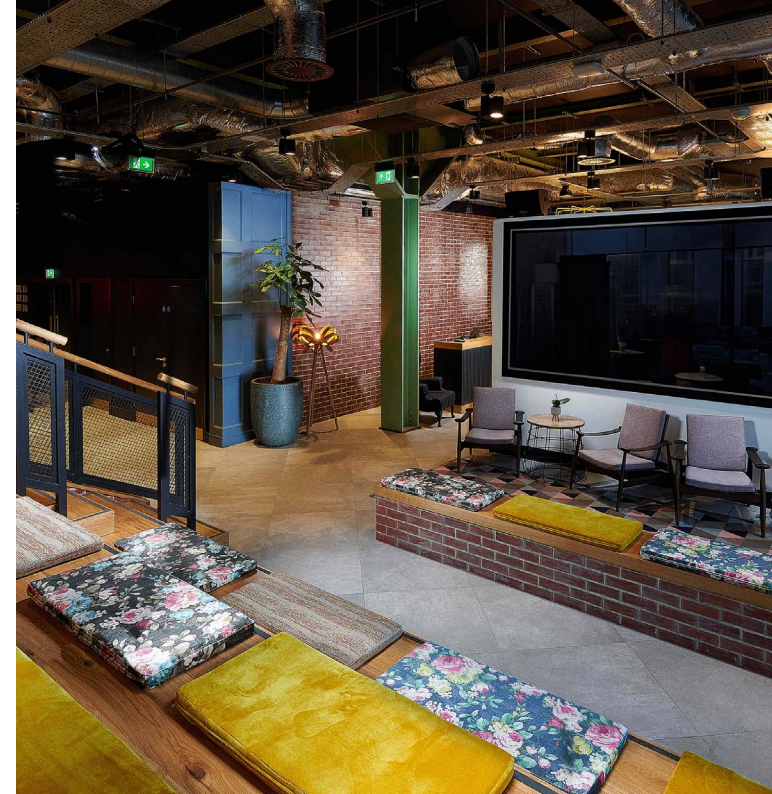
---

## EARN WITH IHG BUSINESS REWARDS

When you make bookings on behalf of others, for business or for pleasure, we're here to reward you. With IHG<sup>®</sup> Business Rewards, you can earn points every time you book accommodations, meetings, or events at nearly 6,000 participating IHG<sup>®</sup> Hotels & Resorts worldwide.

Join now at [ihg.com/businessrewards](https://ihg.com/businessrewards)







# VOCO®

AN IHG HOTEL

---

Manchester

## Finding us

---

### TRAVEL BY RAIL

Nearest mainline train station, Manchester Piccadilly is only a 12 minute walk to the hotel.

Manchester Oxford Road station is only a 8 minute walk.

### TRAVEL BY ROAD

14 miles to / from M62 J20 | Leeds, 45 miles  
Liverpool, 35 miles | London, 200 miles

### TRAVEL BY AIR

Manchester International Airport (MAN), 9 miles  
Liverpool John Lennon Airport (LPL), 43 miles

59 Portland Street, Manchester, M1 3HP  
+44 (0) 161 518 2936 | [events@vcmanchester.co.uk](mailto:events@vcmanchester.co.uk) | [vcmanchester.co.uk](http://vcmanchester.co.uk)